

# Business Pulse



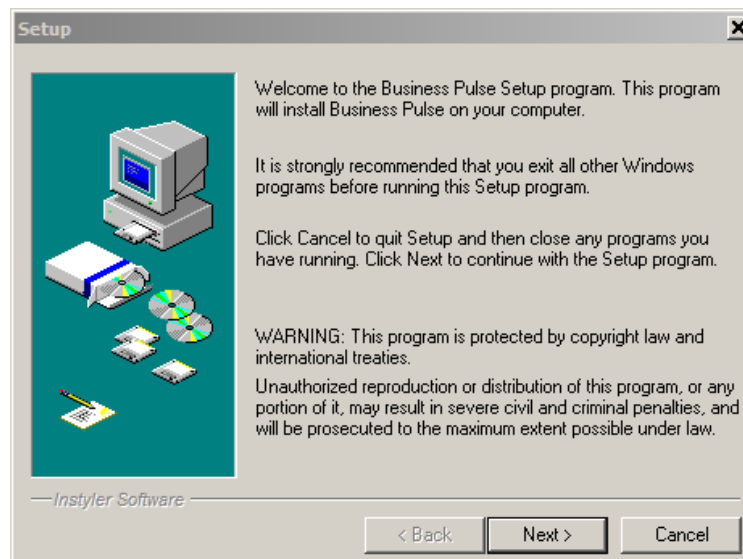
35★45 Consulting-Global

## Installation Instructions

Download the Installation Executable file from the link provided by 3545 Consulting.

Double-Click to begin installation.

The following dialog box will be displayed:

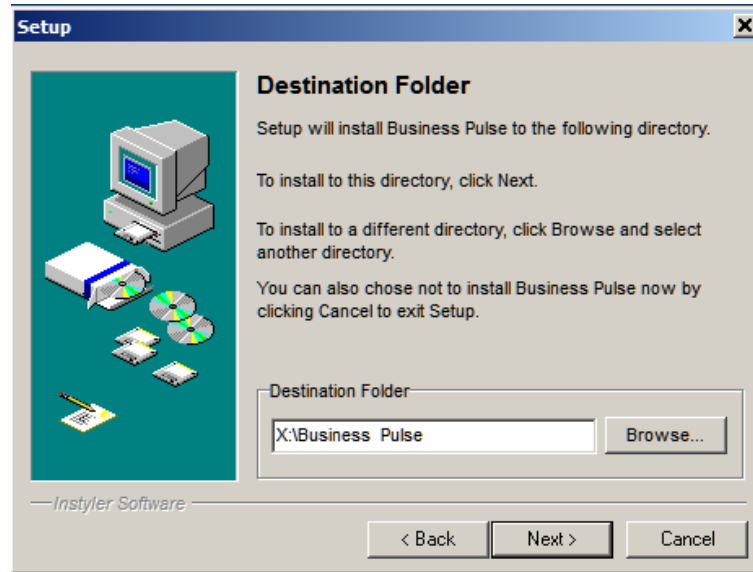


Click 'Next >' to Continue...



Business Pulse is a licensed product. Review the License Agreement then click 'Yes'...

## Report Listing With Descriptions

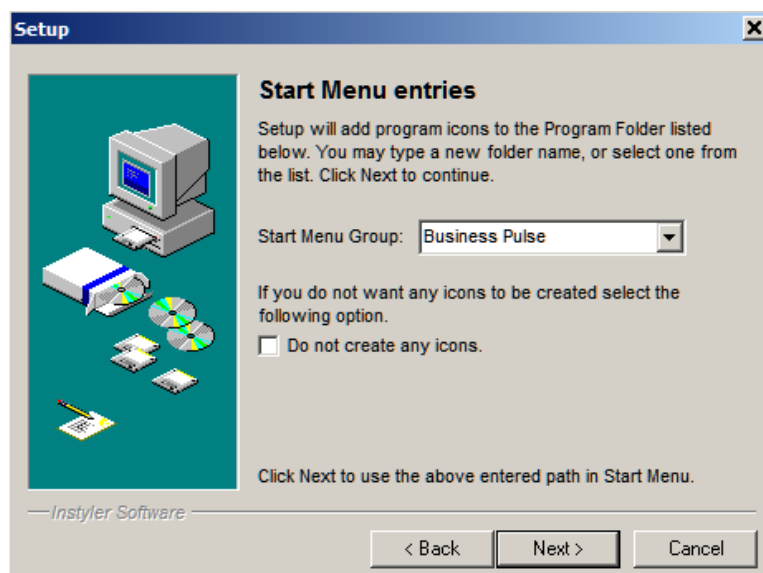


The Destination Folder is a **SAMPLE** of how your destination folder will look. You probably do not have an 'X' drive. Browse to the root folder that you wish to use for installation. The installation application will automatically add the folder 'Business Pulse' to the root folder you select.

For example, if you select 'S:\Apps' as your folder, the final installation folder for Business Pulse will be 'S:\Apps\Business Pulse'

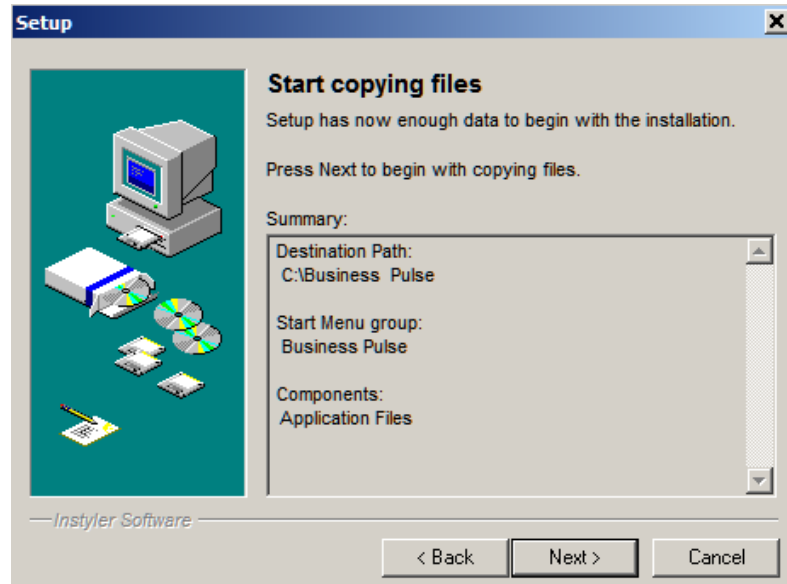
In a network environment, Business Pulse is normally installed to a network folder that is shared among uses who will be using Business Pulse. Users must have read/write access to this shared folder.

After selecting and confirming your installation folder, click 'Next >'...



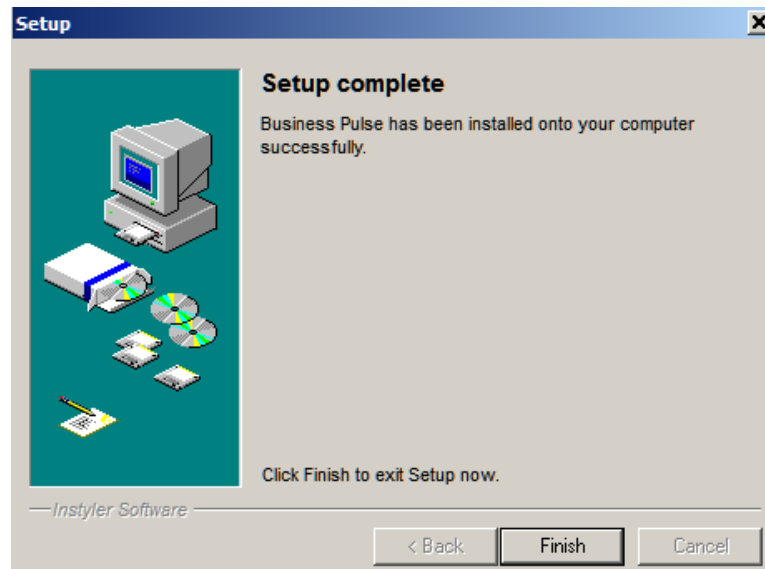
Normally, you would accept these defaults, then click 'Next >'...

## Report Listing With Descriptions



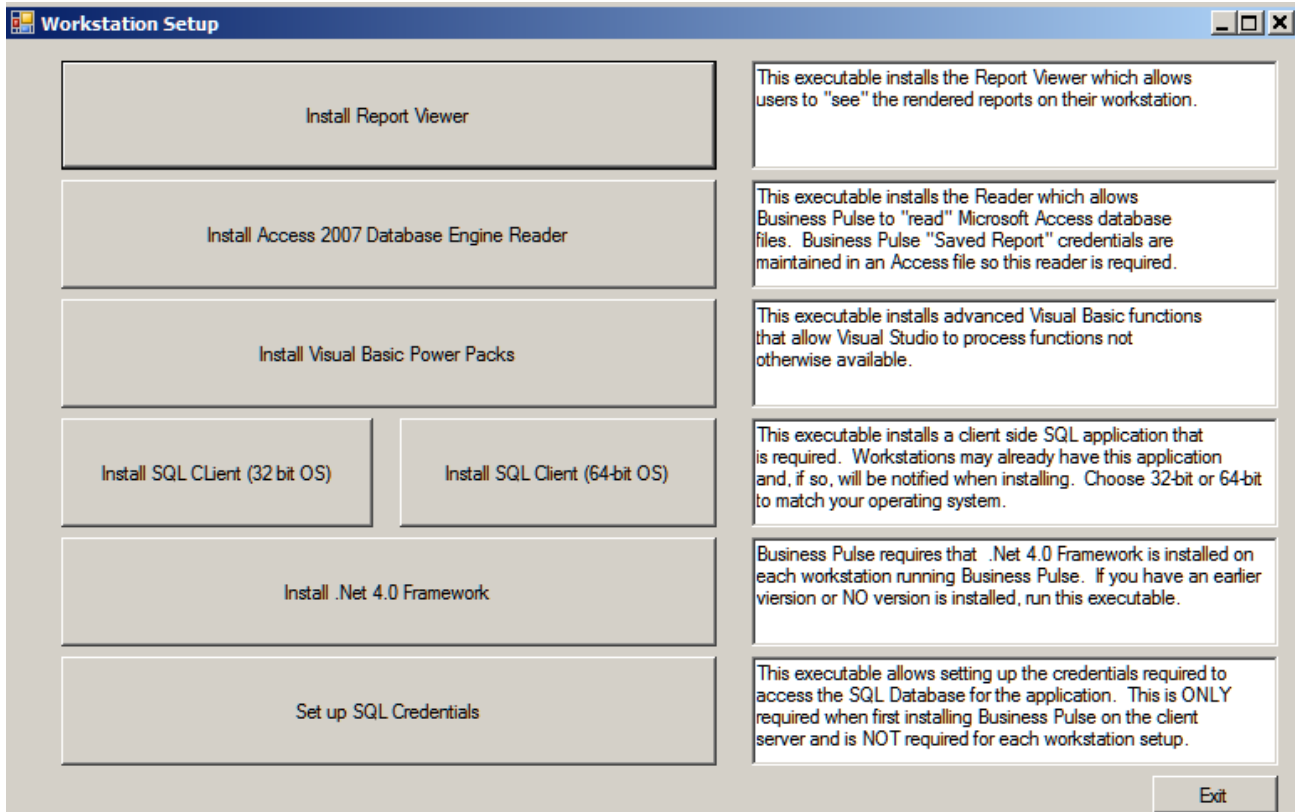
Confirm, then click 'Next >'...

Business will be installed based on the selections you made, then...



Click 'Finish' to continue...

## Report Listing With Descriptions



The workstation setup above will be displayed.

Working from top to bottom, install each application as follows:

1. Install Report Viewer – Accept the defaults. This application allows Business Pulse reports to be viewed on your workstation screen;
2. Install the Access 2007 Engine Reader – Accept the defaults. This application allows Business Pulse to read some data saved in Microsoft Access files. Installing this application prevents the necessity of having a full or runtime version of Access on their system.
3. Install Visual Basic Power Packs – Accept the defaults;
4. Look at the properties for the workstation on which installation is being completed, then install the 32 or 64 bit version, depending upon the workstation OS version;
5. If you have Time Matters 11 or later, dotNet Framework 4.0 will already be installed so you may not need to do this;
6. Set up SQL Credentials (See additional screen shots on the following page)

## Report Listing With Descriptions

Shared Folder	<input type="text" value="\\sql2008\sqlserver\BusinessPulse"/>	< Network folder containing shared Business Pulse files (Images, RDLC files, Executable, etc.)	Staff list for validating connection.
Primary Program	TMBM - Time Matters and Billing Matter	< PRIMARY database if more than one or ONLY database.	
Server Name	<input type="text" value="Your Server Name Goes Here"/>		
User ID	<input type="text" value="ID Name Here"/>		
User Password	<input type="password" value="*****"/>		
Database Name	<input type="text" value="TimeMatters13 (Your DB Name Here)"/>		
DB Schema	<input type="text" value="Intnu13 (Your DB Schema Here)"/>		
	<input type="button" value="Test Primary DB Connection"/>	<input type="button" value="Test PCLaw Connection"/>	<input type="button" value="Test Timeslips Connection"/>
	<input type="text" value="G:\Folder Reports\Reports"/>	< File path to RDLC reports (\\server\reports, etc.)	
	<input type="text" value="NA (not currently used)"/>	< Path to report server (http://sqlserver2008, etc.)	
	<input type="text" value="NA (not currently used)"/>	< Folder housing rdl report files, if a sub-folder (/Reports, etc.)	
	<input type="text" value="Firm Name"/>	< Firm name to appear in Business Pulse headers	
	<input type="text" value="Firm Address 1"/>	< Firm Address, etc.	
	<input type="text" value="Firm Address 2"/>		
	<input type="text" value="Firm City, State, Zip"/>		
	<input type="text" value="Firm Phone"/>	<input type="text" value="Firm Fax"/>	
			<input type="button" value="Save &amp; Close"/> <input type="button" value="Save &amp; Exit"/> <input type="button" value="Close Without Saving"/>

If you can see a valid staff list above after clicking the 'Test Connection' button, then you have successfully connected to your database.

Complete the SQL Credentials here with information pertaining to the SQL Server on which Time Matters is installed, the credentials needed for logging into SQL, the version of Time Matters being used and the location of the rdlc reports.

After completing all fields, click the 'Test Connection' button and, if you see a list of staff in the text box in the upper right corner, you will know you have correctly connected to your version of Time Matters.

Click the 'Save & Exit' button to save the information.

The information on this screen is saved to a table in your Business Pulse shared folder and is used by Business Pulse to retrieve correct credentials for accessing Time Matters.